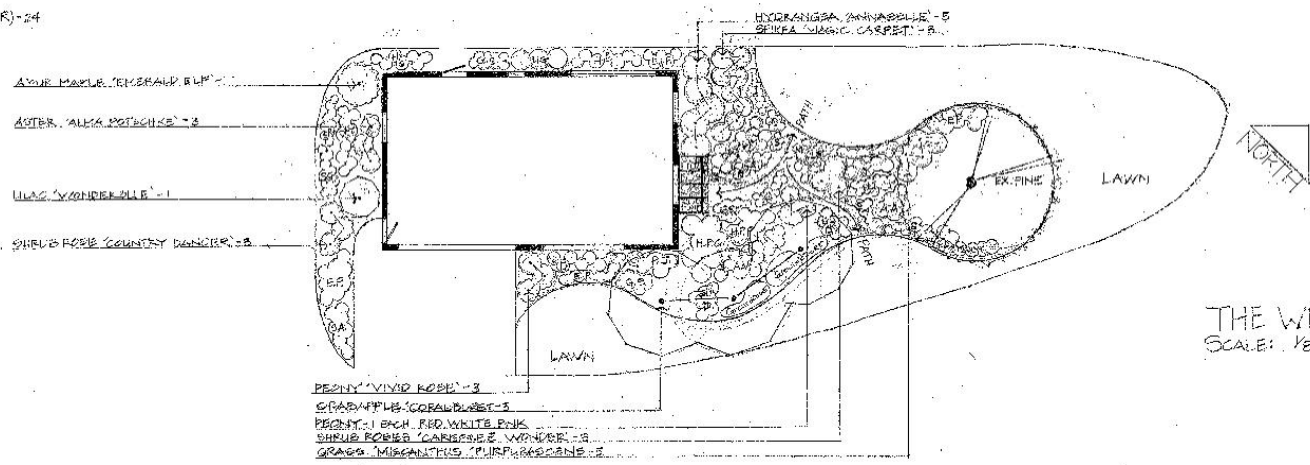
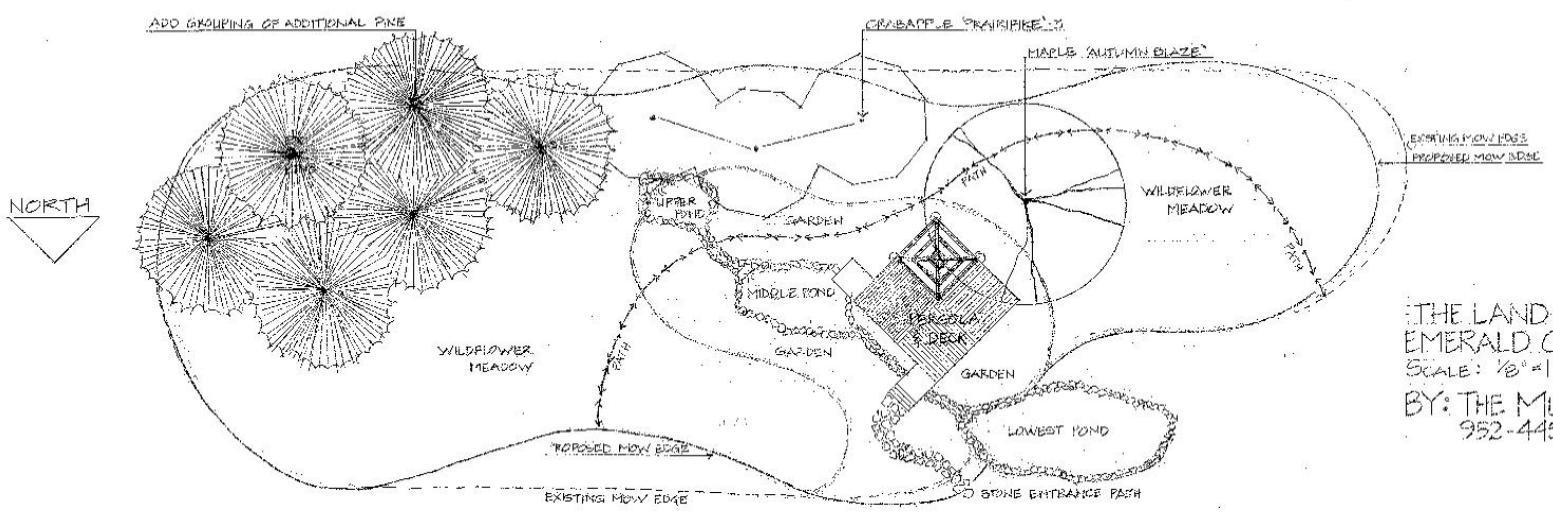


- A.A. ASTER 'ALMA KOTSCHKE' - 5
- A.Y. AST. 'LEE VISIONE' - 18
- C. COREOPSIS 'MOONBEAM' - 17
- D. DELPHINIUM 'BLACK KNIGHT' - 7
- E.P. SACTINACEA 'PURPUREA (PURPLE CAMEFLOWER)' - 24
- S.S. GERANIUM 'SANGUIS-BLUM' - 23
- H.P.P. HEUCHERA 'PALACE PURPLE' - 8
- H.P. HOSTA 'PATRIOT' - 7
- K.G. HOSTA 'GOLDEN TIARA' - 7
- H.P.P. HOSTA 'PAUL'S GLORY' - 7
- L.F. LADY FERN - 3
- L.F. LIGULARIA 'SPELLO' - 3
- L.S. LILIUM 'WHITE' - 9
- I. IRIS 'DWARF BEAUBON (PLUM COLOR)' - 11
- AM. ALCHEMILLA 'LADIES MANTLE' - 8
- M. MONARDA (BIBB BANN) - 6
- R.J. POLYGONUM (CASABA LADDER) - 5
- S. SALVIA 'MAY NIGHT' - 26
- S.A. SEDUM 'AUTUMN JOY' - 4
- S.K. SEDUM 'ROSY GLOW' - 9
- S.G. LIRIODEN DRONIS (GAY'S BATHERS) - 9
- Y. YARROW 'MOONBEAM' - 5
- S.H.D. BRISTLA DAVIDY - 14



THE WIZARD'S LOFT GARDEN
 SCALE: 1/8" = 1'-0"



THE LAND OF OZ B&B/BAY CITY, WI
 EMERALD CITY GARDEN
 SCALE: 1/8" = 1'-0"
 BY: THE MUSTARD SEED INC.
 952-445-6676 Kay Hall 3/14